

ADDERLink INFINITY Range

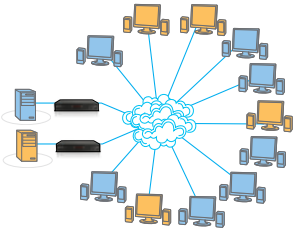
Digital KVM Matrix and Network DVI Extender - Pure digital media extension over IP. Featuring dual link DVI, Digital Audio, USB True Emulation, Network Multicast, Device Switching and EPG style user interface.



NEW

FEATURES:

- Multicast content to an endless number of receivers over a gigabit network
- Dual link DVI video extension over any distance (restricted only by your network topology)
- Optimal spatially lossless compression techniques
- Received video colour is the same as the sent colour every time
- USB True Emulation - supporting almost any HID device including graphics tablets, 3D explorers, custom keyboards and mice etc
- Switch to any connected computer via user friendly EPG style on screen menu
- Digital stereo audio, supporting 2 way communication (speakers and microphone)



ACCESSORIES



ACCESSORIES:

Further flexible solutions are possible using devices such as Remote Control units. Full details are available both online and through our resellers.

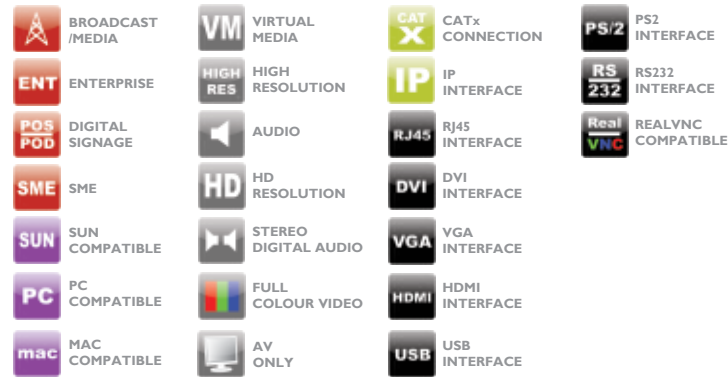
CABLES:

Adder supply a range of cable options and CAM's (Computer Access Modules) to connect PC, Mac & Sun computers to Adder KVM switches and extenders.

RACK MOUNT:

Enables X/X2 Series, ALAV and *ipeps* extender products to be housed in standard 19 inch enclosures for high density, secure storage.

KEY



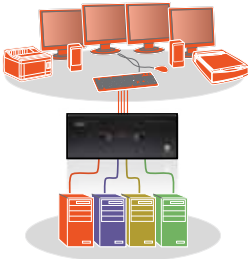
AV4PRO-MS - Professional Media Switch

Professional grade media KVMA switch. Ultimate flexibility for users who wish to select mixed inputs from different sources. Features Adder's unique, advanced USB True Emulation technology.



FEATURES:

- Full dual link quad head DVI-I video with extended profile DDC EDID
- Independent simultaneous selection of keyboard & mouse/HID, DVI, audio and 2 additional USB ports
- True Emulation USB 2.0 Hi-speed technology for broad USB device compatibility
- RS232 control and upgrade
- USB device support includes: Keyboard, mouse, graphics tablet, 3D explorers, force feedback devices, control pads, joysticks etc
- Maximum flexibility, for ultimate control, efficiency & improved workflow
- Dual, Triple and Quad variants available



ADDERVIEW

LOCAL KVM

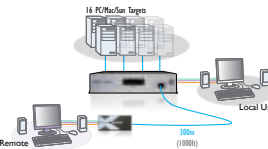
CATx 1000 & CATxIP 1000

The CATx 1000 series offers high density, small form factor, secure KVM via CATx switches that provides local, remote and global access for a user that wish to control up to 16 multi-platform servers.



FEATURES:

- 1600x1200 @ 85 Hz resolutions with DDC emulation
- True multi-platform support
- USB keyboard and mouse control
- Expand using CATx cascade connections (up to 256 targets) with simple, user intuitive set up
- High fidelity, clickless digital stereo audio transmission
- RS232 for target power cycle, synchronization and upgrade
- Integrated CATx extender (CATx 1000)
- Integrated KVM over IP (CATxIP 1000)
- Side by side rack mount enables 32 ports per IU



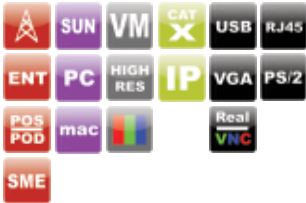
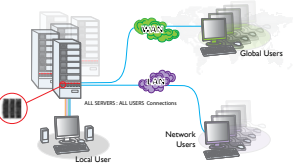
IPEPS Range

The ADDERLink *ipeps* (IP Engine per Server) range delivers a complete, secure, non-blocking approach to computer management in a palm sized unit.



FEATURES:

- High performance KVM over IP
- DVI, VGA, USB or PS/2 connectivity options
- Gives full remote control of computer through entire boot up process, BIOS level or computer crash states
- Transfer files to remote computer using virtual media
- Enterprise grade security (AES 128 bit / RSA 2048 bit)
- Use of Real VNC allows for the creation of ciphered user communications
- 16 user profiles and access data logging
- High density rack mount options available



ADDERVIEW

RACK TRAYS

RDX Range

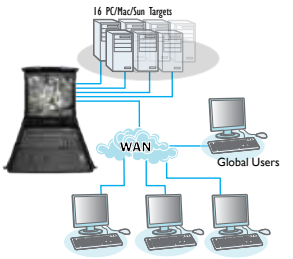
High density rack tray with fully featured USB, PS/2, Sun and Video control for critical environments.



NEW

FEATURES:

- Up to 4 simultaneous IP users across 16 devices - Expandable up to 256 devices
- Available in 3 versions: 4IP plus local, IIP plus local and straightforward local only
- Multi-platform capability and connectivity and serial connectivity on any type of server platform
- LDAP integration plus ADDER.Net management software
- Integrated RS232 allows control of other external devices such as power management
- Serial console server (SCS) - RDX5000IP with CATx CONSOLE CAM delivers SCS connectivity



PRODUCT Focus

www.adder.com

ADDER TECHNOLOGY

Head Office
Tel: +44 (0)1954 780044
email: sales@adder.com



ADDER BERLIN

Central & Eastern Europe
Tel: +49 (0)30 8849 67-50
email: Vertrieb@adder.com

ADDER AMSTERDAM

West & Southern Europe
Tel: +31 (0)297 753 625
email: sales@adder.com

ADDER STOCKHOLM

All Nordic Countries
Tel: +46 (8) 574 210 95
email: sales@adder.com

ADDER BARCELONA

Spain, Italy & Portugal
Tel: +34 937021967
email: sales@adder.com

ADDER CORPORATION

North America & Canada
Tel: +1 888-932-3337
email: usasales@adder.com

ADDER SAN FRANCISCO

West & Central America
Tel: +1 888-932-3337
email: usasales@adder.com

ADDER SOUTH AMERICA

South America
Tel: +34 937021967
email: usasales@adder.com

ADDER TECHNOLOGY LTD

Asia Pacific ex. China
Tel: +65 6288 5767
email: asiasales@adder.com

ADDER SHANGHAI

China
Tel: +86 (0)21 24193030
email: asiasales@adder.com

ADDER HONG KONG

Hong Kong
Tel: +65 6288 5767
email: asiasales@adder.com

ADDERLINK

KVM - EXTENDER

X-DVI PRO

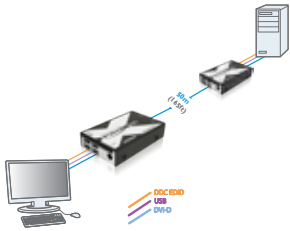
The ADDERLink X-DVI PRO is Adder’s second generation digital extender. It can transmit full HD 1080p DVI video as well as USB over 50 meters with a single CATx cable.



NEW

FEATURES:

- Full single link DVI extender delivering resolutions in excess of Full HD 1080p
- USB low/full speed transparent extension
- Only a single CATx cable to carry video and data together
- Supports read and store for extended profile EDID
- Optional USB powered at Local
- Designed to work with CAT6 trunk cable
- 4 x USBA at Remote
- Works with any OS including PC, Mac and Sun
- Ideal for high performance graphic intensive workloads

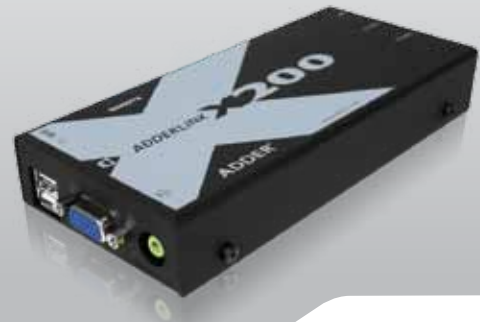


ADDERLINK

USB KVM - A EXTENDER

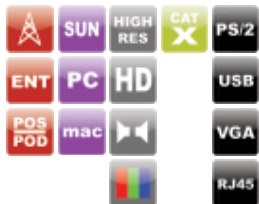
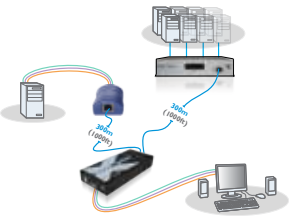
X200

Fully featured USB keyboard, video and mouse extender with optional high fidelity stereo audio support for two computers or a receiver unit for ADDERView CATx family of switches.



FEATURES:

- Extend USB keyboard, mouse, video and optional audio up to 300m / 1000 ft.
- Exceptionally high quality video with skew, brightness and sharpness correction
- Optional high fidelity, clickless digital stereo audio transmission
- Emulated DDC ensures all high performance video cards can be used at high resolutions
- Integrated KVM switch to allow control of additional local or remote computer
- Supports USB keyboards and mouse at receiver



ADDERLINK

A/V USB EXTENDER

X-USB PRO

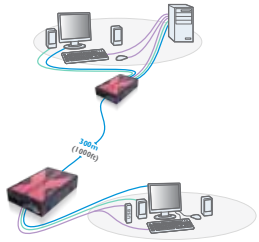
The ADDERLink X-USBPRO is Adder’s second generation Video and USB extender. It can transmit 1920x1200 video as well as USB 2.0 and audio over 200 meters with a single CATx cable.



NEW

FEATURES:

- Supports resolutions of 1900x1200 resolution over 200m / 650 ft.
- USB 2.0 low/full speed transparent extension
- Only a single CATx cable to carry video and data together
- Supports read and store for extended profile EDID
- USB powered at Local
- Stereo CD quality audio
- Fine video compensation

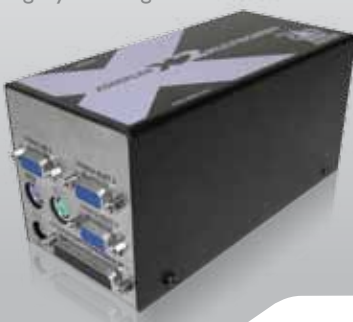


ADDERLINK

MS KVM EXTENDER

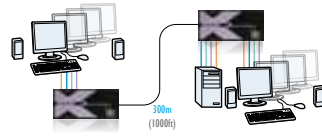
X2 MultiScreen

The ADDERLink X2-MultiScreen extends two or four very high quality video signals together with keyboard, mouse, high fidelity audio and two or four transparent, full speed RS232 signals up to 300m / 1000 ft. over Category 5 or higher UTP cable.



FEATURES:

- Supports resolutions of 1600 x 1200 at 200m / 650 ft. and 1280 x 1024 at 300m / 1000 ft.
- Integrated skew correction
- Independent, very fine video compensation and brightness control
- Advanced spike suppression for reliability in ‘noisy’ installations
- Emulated DDC ensures all high performance video cards can be used at high resolutions
- Multi-head local KVM access is provided at the computer
- High fidelity, clickless digital stereo audio transmission



ADDERLINK

A/V USB EXTENDER

X50 & X50 MultiScreen

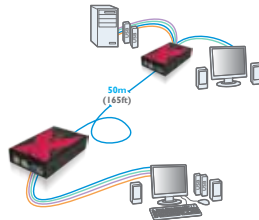
The ADDERLink X50 extends very high quality video, transparent, slow/full speed USB and high fidelity audio up to 50m / 150 ft.



MultiScreen Version Now Available

FEATURES:

- Industry leading video quality
- Independent, very fine video compensation control
- Supports all slow/full speed USB complaint devices
- Integrated 4 port hub allows a mixture of connected USB devices
- High fidelity, clickless digital stereo audio transmission
- Fully emulates DDC allowing all well-known high performance video cards to be used at high resolutions

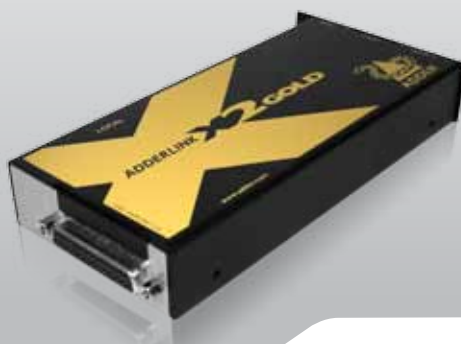


ADDERLINK

KVM-A RS232 EXTENDER

X2 Silver & Gold

The ADDERLink X2-Silver and X2-Gold, extend very high quality video, keyboard, mouse, transparent, high speed RS232 and high fidelity audio up to 300m / 1000 ft. over Category 5 or higher UTP cable.

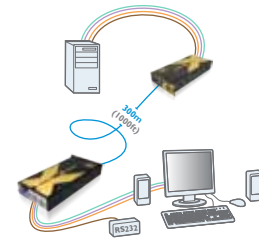


FEATURES:
SILVER & GOLD

- Supports resolutions of 1600 x 1200 at 200m / 650 ft. and 1280 x 1024 at 300m / 1000 ft.
- Integrated skew correction
- Independent, very fine video compensation and brightness control
- Emulated DDC ensures all high performance video cards can be used at high resolutions
- Advanced spike suppression for reliability in ‘noisy’ installations
- Dual access versions provide local KVM access at the computer

GOLD

- High fidelity, clickless digital stereo audio transmission



ADDERLINK

VIDEO EXTENDER

LPV150

The ADDERLink LPV has been designed to deliver stunning results at a really attractive price, making it the perfect introduction to professional digital signage.

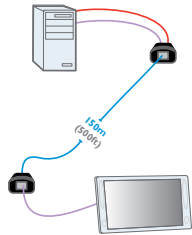


NEW

No external power supply required.
USB line powered

FEATURES:

- Full HD video resolution - 1080p, 1080i and 720p
- Line powered, simply plug into a USB port to power both transmitter and receiver
- Unbeatable value
- Advanced DDC protocol to deliver perfect video on startup
- Fit and forget professional grade digital signage design
- The easiest way to extend high quality video 150m for Digital Signage & DOOH applications

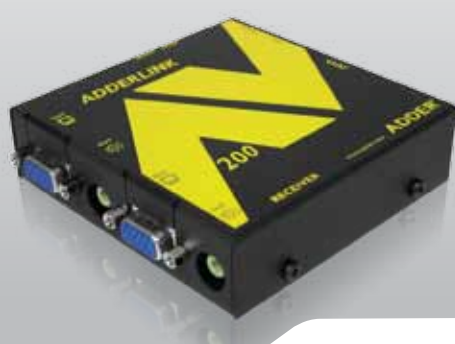


ADDERLINK

A/V RS232 EXTENDER

AV200

The ADDERLink AV200 Series is a range of audiovisual extenders delivering high video resolutions and high fidelity audio up to 300m / 1000 ft. over Category 5 or higher UTP cable.



FEATURES:

- Interchangeable units for flexible distribution
- Excellent video quality at 300m / 1000ft
- Resolutions up to HD 1080
- Fine, independent sharpness and brightness control
- High fidelity, digital stereo audio transmission
- Integrated de skew (AV201R)
- Control and interact with display devices using integrated RS232
- High density rack mount option
- Compact rack-mountable chassis for large installations
- Dual video and audio outputs to support back to back monitor applications

