



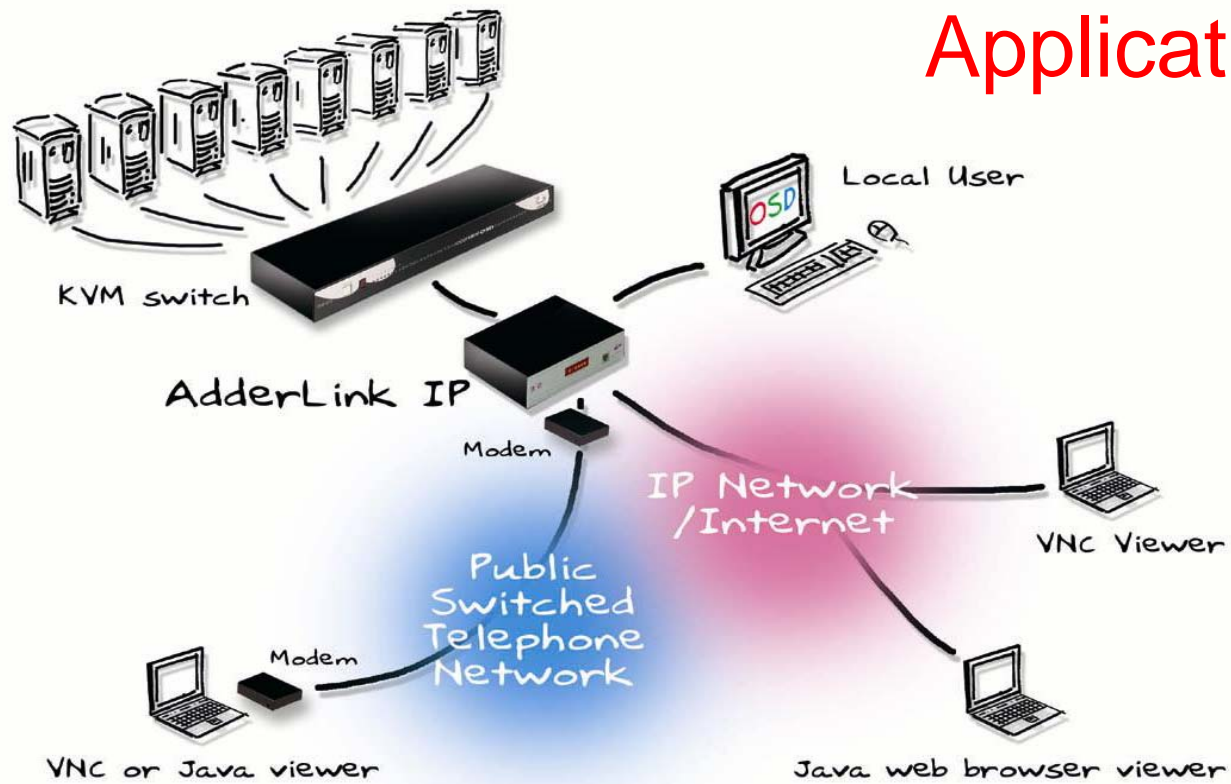
AdderLink IP





AdderLink IP

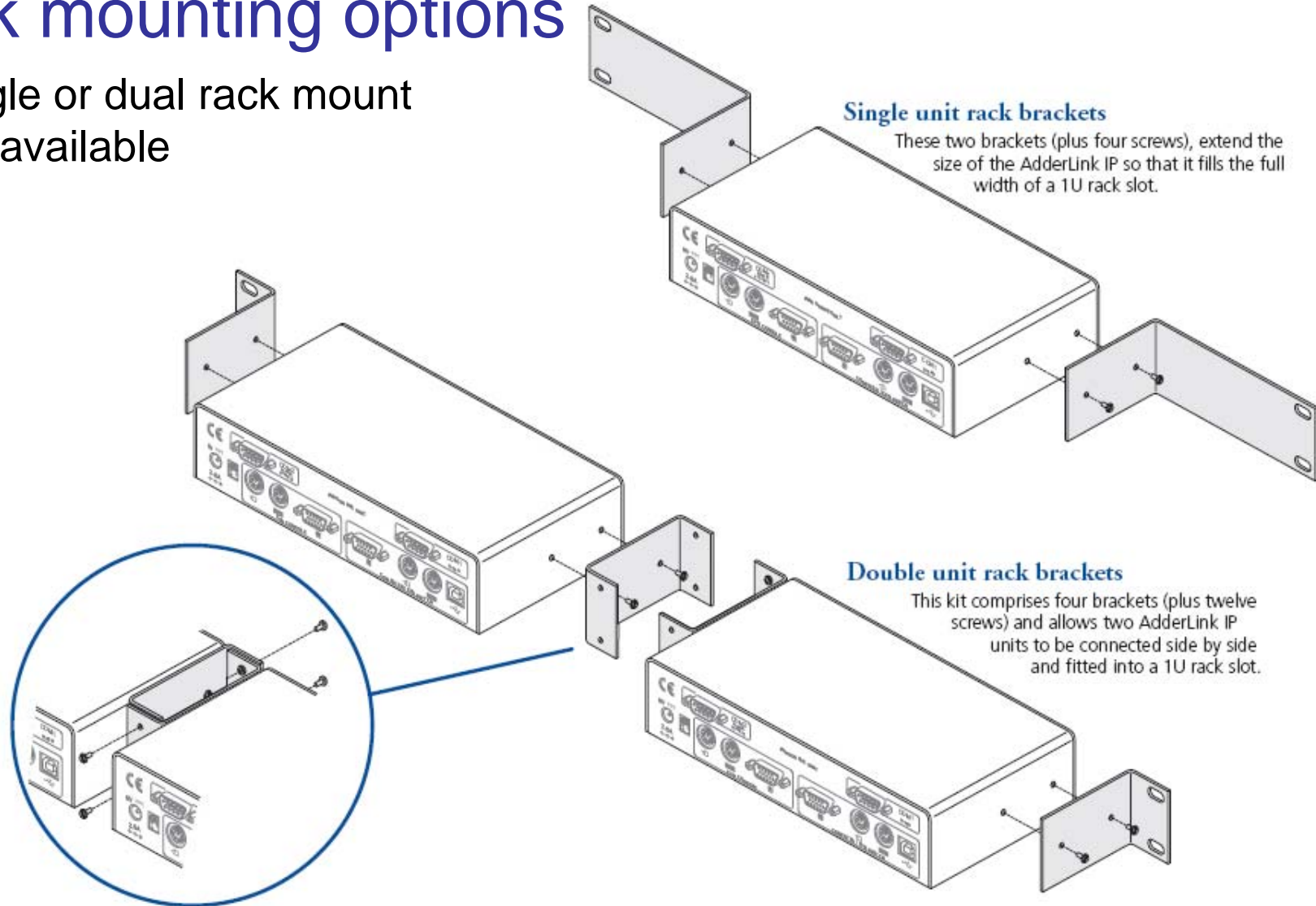
Application

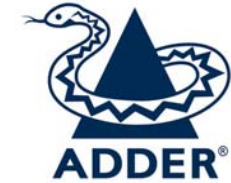




Rack mounting options

- Single or dual rack mount kits available



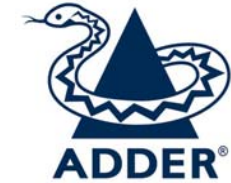


Trusted KVM-via-IP technology

- The feature set of product is now well known to Adder Partners and the product is selling very well
- Excellent performance, colour depth and wide ranging KVM switch compatibility make this product a safe recommendation
- Supports RealVNC viewers – the exceptionally well known worldwide remote control software standard (the simpler open-source version of this software has had an estimated 100,000,000 downloads!!)
- Excellent for fitting onto the front end of all types of KVM switch

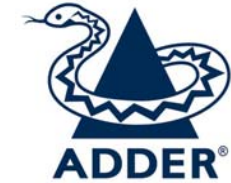


AdderLink IP USP's



- No software required on the computers
- High LAN performance provides near real time console experience
- Enterprise grade security architecture 128 bit AES
- Easy Set-up via a KVM console
- Elegant 'in-picture' menus simplify the user interface and enable standard VNC viewers and single-window web browsers to be used
- Power control functions supported via a dedicated serial port
- Up to 127 servers supported on from the console menu

Screen View



“Calibrate all” button flashes red if this screen mode has not yet been

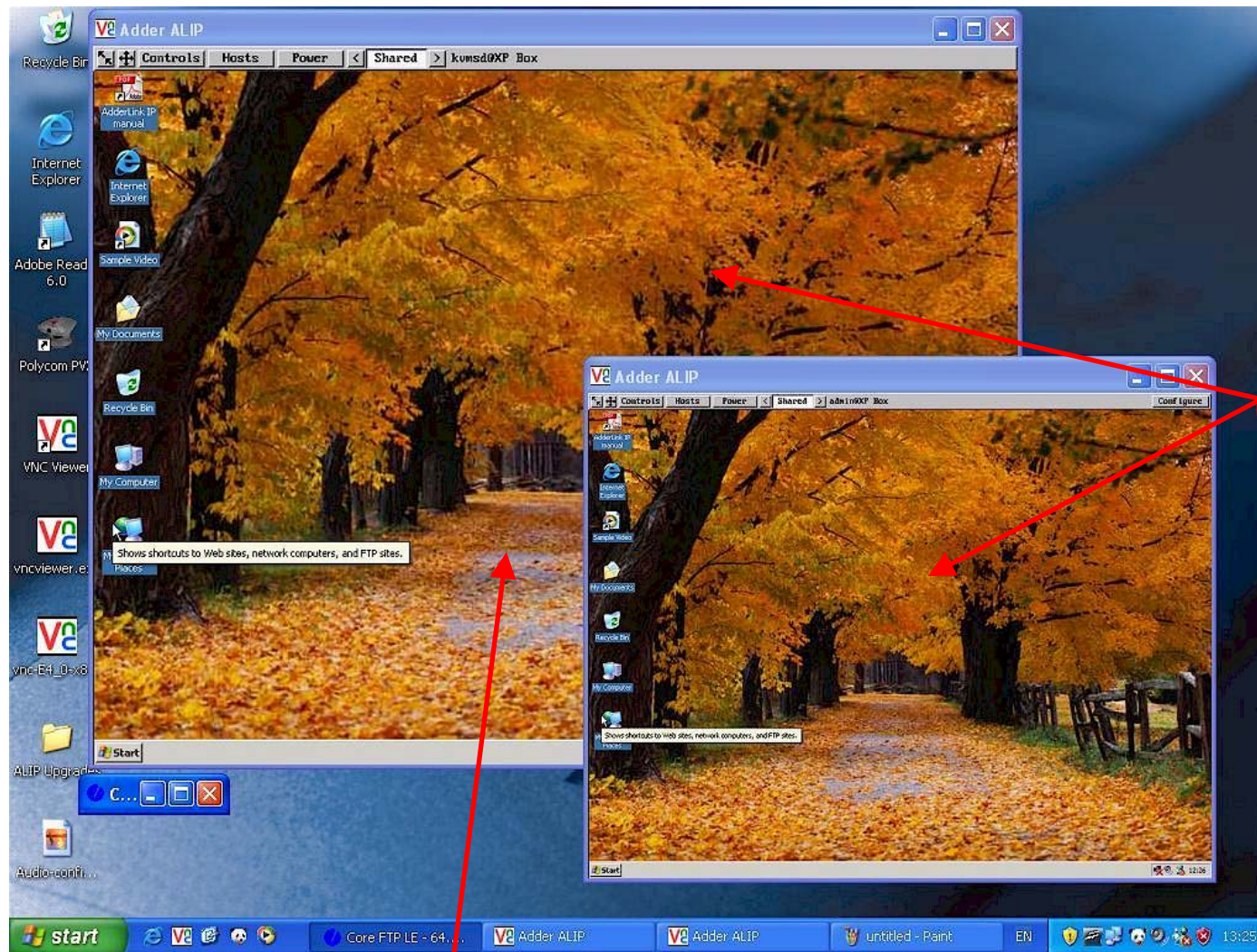
calibrated

```
Controls Hosts Power < Shared > admin@Plum Configure
-rw-r--r-- 1 root root 3444 Apr 10 10:45 secure.3
-rw-r--r-- 1 root root 3730 Apr 5 23:59 secure.4
-rw-r--r-- 1 root root 0 Apr 25 04:03 spooler
-rw-r--r-- 1 root root 0 Apr 18 04:03 spooler.1
-rw-r--r-- 1 root root 0 Apr 11 04:03 spooler.2
-rw-r--r-- 1 root root 0 Apr 4 04:03 spooler.3
-rw-r--r-- 1 root root 0 Apr 28 04:03 spooler.4
drwxr-xr-x 2 root root 4096 Apr 8 20:32 vbox
-rw-rw-r-- 1 root root 0 Apr 10 10:45 tmp
-rw-rw-r-- 1 root root 0 Apr 10 10:45 tmp.1
-rw-r--r-- 1 root root 0 Apr 10 10:45 tmp.errors
-rw-r--r-- 1 root root 0 Apr 10 10:45 XFree86.0.log
-rw-r--r-- 1 root root 0 Apr 10 10:45 XFree86.9.log
[root@plum log]# ls
boot.log cups k
boot.log.1 dmesg k
boot.log.2 fax l
boot.log.3 gdm m
boot.log.4 httpd m
cron ksyms.0 m
cron.1 ksyms.1 maillog.3 rmpkgs.3 spooler.2
cron.2 ksyms.2 maillog.4 rmpkgs.4 spooler.3
cron.3 ksyms.3 messages scrollkeeper.log spooler.4
cron.4 ksyms.4 messages.1 secure vbox
[root@plum log]#
```

Simplified user interface

On-screen dialogues interact with the user

Host video



View Hi-Res Screens on a lo-Res monitor

Full Colour Viewer



Focus on:

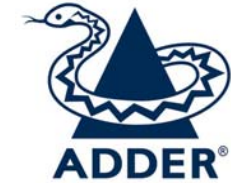
“Port Direct” feature

- The “Port Direct” function may be used with a ServSwitch Uno, Duo or Quadro
- The AL- IP and ServSwitch detect each other’s presence via signalling on the keyboard connection
- All KVM switching events are communicated to the AL- IP so that the equipment operates as a single integrated system



Units co-operate to act as a single system





Focus on:

“Port Direct” feature

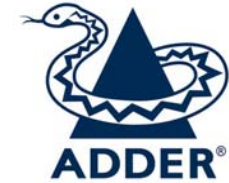
- The AdderLink IP keeps a table of the video and mouse settings for each video mode seen on each computer
- The “Port Direct” feature enables the AdderLink IP to apply the relevant video and mouse settings regardless of whether the AL- IP “hosts” menu or the KVM switch OSD is used to switch

Computer	Port
WTN - Computer 3	03
WTP - File 1	04
WTS - Computer 2	02
WTX - Test 1	08
WWW - Comms2	05

User port 4	Status
ADMIN	SHARED USE
F1-More menus	F3-Find
Esc-Quit	F4-Logout

OSD and ‘Hosts’ menus
act in synchrony





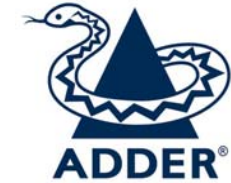
Focus on:

“Port Direct” feature

- The “Port Direct” feature enables simple port numbers to be used instead of complex hotkey combinations
- (e.g. Use **[08]** for port 8 rather than +CTRL+ALT+8-8-CTRL-ALT)
- The AdderLink IP can be set to automatically add new entries to its ‘hosts’ table when a previously unused KVM switch port is selected
- Requires AL-IP firmware 2.1 and XPRO/Matrix firmware 2.06 or higher

Host Configuration	
Name	WTX - Test1
Users	*
Hotkey / KVM Port	[08]
Power Control Sequence	
Power On	
Power Off	
OK Clear Cancel	

Simple KVM port specification

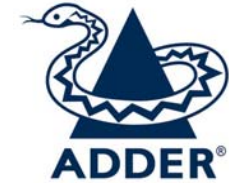


AdderLink IP developments

The following features are under development and will be available by the end of the year

- Ctrl/Alt/Del button on the main menu bar
(very common function so quick operation is very helpful)
- Easier integration with the Octopus / Octet (Avocent AMX switch)
(Names can be added as [NAME] rather than +-N+-A+-M+-E etc.)
- Names can be displayed in port number or alphabetical order in the 'hosts' menu
- Ability to search for a host by name



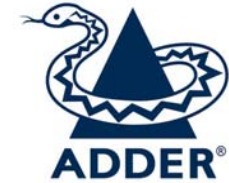


AdderLink IP developments

The following features are under development and will be available by the end of the year

- Video only mode
(has been requested by some customers)
- Network upgrades without the use of the option switch
(again, requested by a variety of customers)
- Manual calibration of colours
(needed for some DOS-style bootup screens that have subtle colour contrast)
- USB virtual media support via the USB port
(enables files to be transferred from the viewer to the host)

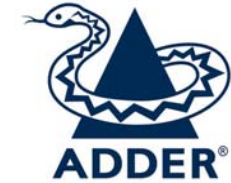




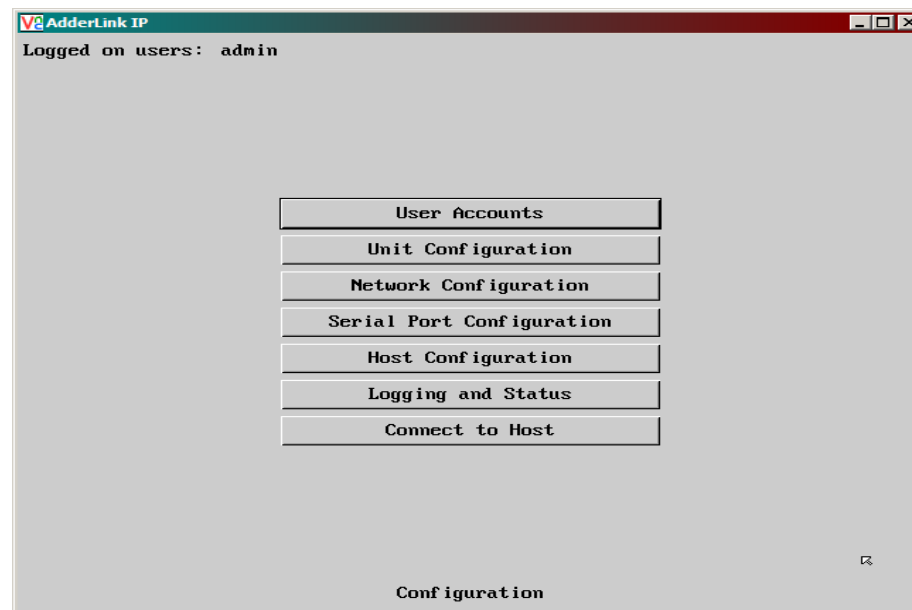
AdderLink IP developments

The following features are under development and will be available by the end of the year

- Network Time Protocol (NTP)
(enables the AdderLink IP's time to be synchronized exactly using an NTP server)
- Syslog feature
(enables multiple AL-IP to send log reports to a centralised syslog server)
- General speed improvements
(an improved network driver has been used that delivers speed improvements on complex networks)
- Aim is to enable most of the above features to be downloaded to current units via flash upgrade



AdderLink IP Demonstration



RackTech Systems Nordic AB

www.racktech.se

033 - 14 04 70

08 - 21 08 70

Info@racktech.se

Borås

Stockholm